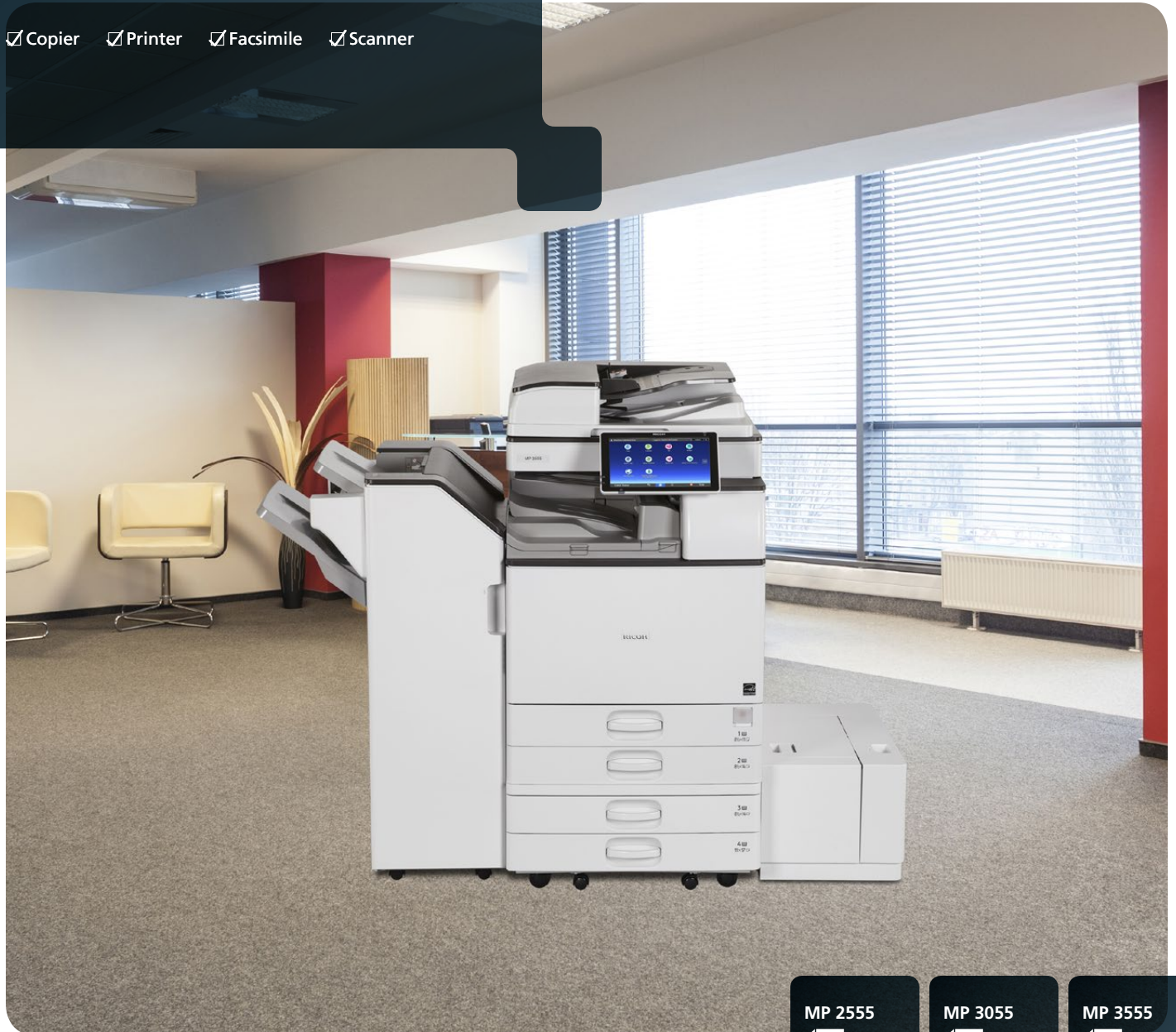


Multifunction B&W

RICOH MP 2555/MP 3055/ MP 3555

✓ Copier ✓ Printer ✓ Facsimile ✓ Scanner



RICOH
imagine. change.

MP 2555

25 ppm
monochrome

MP 3055

30 ppm
monochrome

MP 3555

35 ppm
monochrome

Turn the everyday into an easy day

There are no easy answers. But at least there's an easy way to share the answers you have. Use the RICOH® MP 2555/MP 3055/MP 3555 to simplify everyday office tasks and move information to the people who need it most, in the format they prefer. Print and copy important business-class presentations and proposals and choose between multiple internal and external finishers for a professional, polished look. Scan full-color images, brochures and other forms and distribute them instantly. With the same pinch-and-flick and scrolling gestures you use on your smartphone or tablet, you can access critical information, set shortcuts and distribute information from the advanced 10.1"-wide Super VGA Smart Operation Panel. Or, connect remotely and work on the go. Take advantage of advanced security controls to help protect your data wherever it goes, from wherever you are.

- Print up to 35 prints/copies per minute for productive black-and-white output
- Use intuitive touchscreen controls to copy, print, scan and fax quickly
- Create your own workflows with shortcuts to simplify tasks
- Access, print and distribute information from your personal mobile device
- Minimize energy costs via a wide range of innovative eco-friendly features
- Produce professional-looking saddle-stitched and punched booklets, presentations and proposals
- Simplify sorting and stapling tasks with compact internal and high-output external finishers
- Toggle between stapled or stapleless finishing automatically with an external hybrid 1,000-sheet finisher



Add value to everything, everywhere

Enhance multifunction productivity effortlessly

Get the word out quickly

When sharing information, on-time delivery leads to on-the-money decisions. Use one-touch controls on the MP 2555/MP 3055/MP 3555 to print black-and-white notes, reports, presentations and more at up to 35 pages per minute (ppm). Use the 100-Sheet Automatic Reversing Document Feeder (ARDF) or 220-Sheet Single Pass Document Feeder (SPDF) to scan black-and-white or full-color originals and distribute them digitally in an instant. Store up to 3,000 files on the embedded Document Server. Grab the one you need and print or send it immediately with fewer steps to save time. Add paper trays and expand total paper capacity to 4,700 sheets to minimize interruptions.



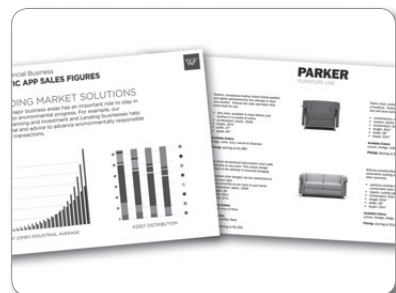
Work whenever, wherever

A great idea can come out of nowhere. The key is being able to send it somewhere. Simply download the RICOH Smart Device Connector app on your Android® or iOS® devices to share information and print without printer setup configurations or utilities. Connect your Android and iOS devices with the MFP via Bluetooth (BLE), or Android devices using the Near Field Communication (NFC) tag. Grab information directly from cloud storage applications, such as Google Drive™, Box™ or Dropbox™, and print it using the RICOH Smart Device Connector app. Plus, you can now print emails and attachments with the latest version (v3.0) of the app. Scan originals at the MFP and send them to your personal device or directly to cloud storage, so you can access or distribute them digitally at your convenience. Printing from AirPrint® is also available.



Compel with quality

It's not a good look when your message goes unnoticed. Use the MP 2555/MP 3055/MP 3555 to impress audiences with sharp images and precise text at up to 1200 x 1200 dpi resolution in PC, Mac or Linux. Find important details and make changes quickly in fewer steps with the icon-driven drivers. For customers that require more complex work flows, these new devices now include standard PostScript to help improve productivity. With the 1.46 GHz Intel® based controller, you can handle your most complex printing and scanning tasks. Print on a wide range of paper types, from envelopes to cardstock to 11" x 17" sizes. Give output a new feel with thicker stocks up to 300 g/m². You can even create an easy-to-see poster from one of your current documents.





Speed up your workflow

Get in touch with productivity

Designed with RICOH Workstyle Innovation Technology, the customizable 10.1"-wide Smart Operation Panel uses your familiarity with today's touchscreen devices to provide a more intuitive user experience. Find the critical information you need quickly with the same pinch-and-flick, swipe scrolling and drag-and-drop gestures you use on your smartphone or tablet. All hard keys have been removed and information is displayed via easily identifiable icons in a grid-like interface. Customize the user interface with specific icons for important settings and features that you use regularly and perform specific tasks with a single touch. The MFP includes a web browser, so you can also print web pages, images and documents found online as PDFs.



Use shortcuts to move ahead quickly

You know what you have to do. Now, you know how to do it faster. Customize your own automated workflows on the Smart Operation Panel and reduce repetitive manual steps that can impede the flow of information. Download easy-to-use workflow apps from the RICOH Application Site to add specific features or single-function capabilities to simplify how you perform everyday tasks. For example, you can download the Conference Concierge app for step-by-step instructions on how to create supporting materials in the right format for your next big event. Download the ID Card Scan & Copy app to scan two-sided originals onto one side of a sheet of paper. You can even download the How-to Videos app for quick, convenient tutorials to expedite troubleshooting and customization tasks.



Integrate with fast, easy workflows

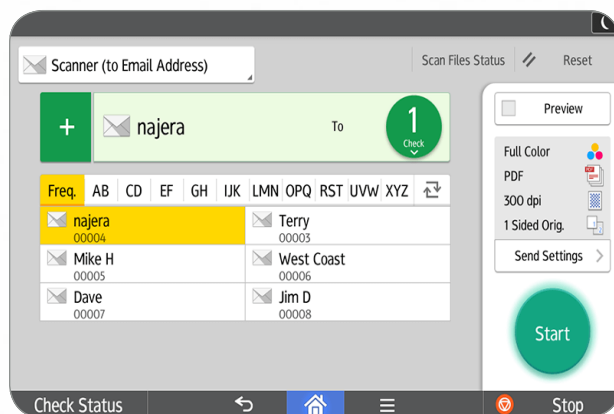
Your office does everything. But does everyone know how to do it? Simplify even the most complex tasks by integrating the MP 2555/MP 3055/MP 3555 with Ricoh and third-party workflow software. Automate document management workflows, improve printer security controls, track costs, issue chargebacks and much more. For example, you might handle hundreds of paper documents every day. Use RICOH GlobalScan™ NX to reduce manual touch points, so you can convert them into digital files and route them around the globe in only moments. You can even use device management software, such as RICOH Streamline NX®, for centralized one-source control to expedite document management tasks for your entire fleet.



Turn your best ideas into immediate action

Scan and share critical information

Make real productivity gains in real time with a wide range of scanning capabilities. Convert hardcopy documents and images into digital PDF, JPG or TIFF files and share them instantly via multiple Scan-to capabilities. Even your most complex and graphics-intensive files can be compressed, so you can send them without delays or image degradation. With optional Optical Character Recognition (OCR) scanning, you can create PDF files that can be searched for by keywords. Use Distributed Scan Management (DSM) to simplify scanning for your entire organization. Set user permissions, assign rules and customize delivery preferences to automate and expedite everyday scanning tasks.



Cut your costs and environmental impact

Saving money should always be part of the plan. That's why we designed the MP 2555/MP 3055/MP 3555 with a wide range of sustainable, eco-friendly features. It is ENERGY STAR® certified and meets EPEAT® Gold criteria* to help reduce your environmental footprint. You can also schedule the MFP to power down when the office is empty and reduce paper costs with default duplex printing.

*EPEAT Gold rating is applicable only in the USA.



Keep tabs on your best people and ideas

A misplaced idea can turn into a missed opportunity. Protect information with a wide range of security controls. With user authentication, users have to log in to the MFP to gain access to information and controls. Have them enter a passcode, billing code or swipe an ID card with the optional NFC or HID card readers. You can track each user and see what they print and distribute. With Locked Print, jobs are held until the user releases them via authentication. Worried about excessive printing? Set print quotas. Want to charge departments for print usage? Add optional accounting software, such as RICOH Device Manager NX Accounting, to issue chargebacks. The hard disk drive offers powerful encryption protection. The built-in DataOverwriteSecurity System (DOSS) overwrites latent images remaining on the hard drive.



To view detailed features of our multifunction products online go to www.ricoh-usa.com/products

Make big productivity gains in small offices

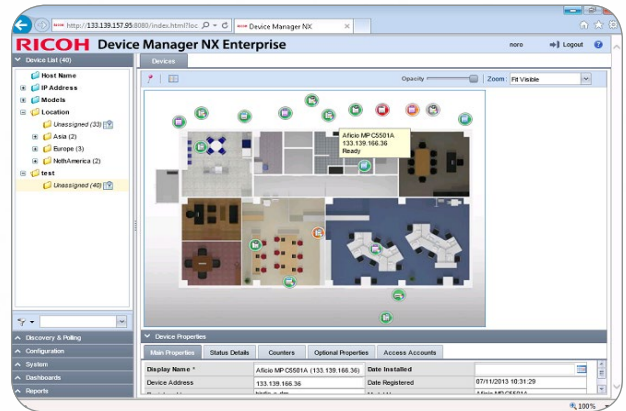


- 1 Full-Color 10.1"-Wide Super VGA Smart Operation Panel:** Navigate between jobs and tasks with precise fingertip control. Use the same pinch-and-flick and swipe scrolling gestures you use on your smartphone and tablet to access menus, check settings and initiate jobs effortlessly.
 - 2 Automatic Reversing Document Feeder:** Load up to 100 single-sided or double-sided color or black-and-white originals for fast and easy scanning, copying and faxing.
 - 3 Standard Paper Trays:** Load up to 1,200 sheets of paper — up to 11" x 17" — with two 550-Sheet Paper Trays and the 100-Sheet Bypass Tray.
 - 4 Additional Paper Storage (Optional):** Add the 2,000-Sheet Tandem Large Capacity Tray and 1,500-Sheet Side Large Capacity Tray to expand paper capacity up to an incredible 4,700 sheets for longer, uninterrupted print runs. Or, use the optional 1 x 550-Sheet Paper Tray or 2 x 550-Sheet Paper Tray for multiple paper sources on demand.
 - 5 Document Retrieval:** Separate output for easy retrieval even in the busiest offices with the optional 125-Sheet One-Bin Tray and the 250-Sheet Internal Shift-Sort Tray.
 - 6 Document Finishing:** Produce professional documents to minimize outsourcing. Design your own complete document production solution with optional finishers, including a 1,000-Sheet Booklet Finisher, 500-Sheet Internal Finisher and 250-Sheet Internal Stapleless Finisher. With the 1,000-Sheet Hybrid Staple + Stapleless Finisher, you can choose between traditional automated staples, or stapleless output for up to five sheets of paper. This unique technology minimizes supply costs, simplifies paper shredding and offers a safer option for unique audiences such as schools and food manufacturing organizations.
- Single Pass Document Feeder (not shown):** The MP 2555/MP 3055/MP 3555 have Single Pass Document Feeder (SPDF) versions to help expedite scanning tasks. Load up to 220 single-sided or double-sided color or black-and-white originals in the SPDF for fast and easy scanning, copying and faxing.

Improve workflows in your small office or workgroup

Manage configurations, updates and more remotely

Expand productivity from one device to an entire fleet. Use RICOH Device Manager NX from any web browser to configure devices, add updates and monitor usage. Updating print drivers has never been easier. Simply install RICOH Device Software Manager and they'll update automatically. Use RICOH @Remote to collect meter readings automatically. You'll also receive automated service alerts, so you can react quickly when maintenance is required. Need technical assistance? You can download a series of How-To apps from the RICOH Application Site.



Engine/Copier Specifications

Configuration	Desktop
Scanning Element	One-Dimensional Solid Scanning Through CCD
Printing Process	Single Laser Beam Scanning & Electrophotographic Printing
Toner Type	Dry, dual component
Copy Resolution	600 x 600 dpi
Maximum Copy Quantity	Up to 999
First Page Out Time	4.6 seconds for MP 2555/MP 3055 4.3 seconds for MP 3555
Warm-Up Time	Less than 24 seconds
Recovery From Sleep Mode	7.9 seconds
Memory (Standard/Maximum)	2 GB RAM + 320 GB HDD (Shared)
Original Type	Book/Sheet/Object
Maximum Original Size	Up to 11" x 17"
B&W Print Speed (Letter/A4)	MP 2555: 25 prints/minute MP 3055: 30 prints/minute MP 3555: 35 prints/minute
Power Source	120V/60Hz/12A
Max. Power Consumption	Less than 1.6kW
Typical Electricity Consumption (TEC)**	MP 2555: 0.9 kWh/week MP 3055: 1.1 kWh/week MP 3555: 1.4 kWh/week
Standard Paper Capacity	1,200 sheets (550 sheets x 2 trays and 100-Sheet Bypass Tray)
Maximum Paper Capacity	4,700 sheets (w/Tandem LCT + Side LCT)
Supported Paper Types	Plain, Recycled, Colored, Special, Letterhead, Preprinted, Pre-punched, Bond, Cardstock, Envelope, OHP*, Label*
Supported Paper Sizes	Tray 1 & 2: 5.5" x 8.5" - 11" x 17" (A6 - A3) Bypass Tray: 5.5" x 8.5" - 12" x 18" (A6 - A3)
Supported Paper Weights	Tray 1 & 2: 16 - 80 lb. Bond (60 - 300 g/m ²) Bypass: 14 - 80 lb. Bond (52 - 300 g/m ²) Duplex: 14 - 68 lb. Bond (52 - 256 g/m ²)
Standard Output Capacity	500 sheets
Maximum Output Capacity	1,625 sheets (Bridge Unit + 1 Bin + 1,000-Sheet Finisher)
Document Feeder Type	Automatic Reversing Document Feeder (ARDF) Version or Single Pass Document Feeder (SPDF) Version
Document Feeder Original Size	5.5" x 8.5" - 11" x 17" (A5 - A3)

Document Feeder Paper Weight	Simplex: 11 - 34 lb. Bond (40 - 128 g/m ²) Duplex: 14 - 34 lb. Bond (52 - 128 g/m ²)
Document Feeder Capacity	ARDF: 100 sheets, SPDF: 220 sheets
Preset Reduction & Enlargement Ratios	25%, 50%, 65%, 73%, 78%, 85%, 93%, 100%, 121%, 129%, 155%, 200%, 400%
Zoom Range	25% to 400% in 1% increments
Standard Features	Auto Paper Select, Auto Tray Switch, Auto Image Density, Auto Text & Photo Separation, Auto Start, Auto Off Timer, Booklet/Magazine Copy, Shift/Erase/Margin Adjustment, Combine (Layout), Cover/Chapter/Slip Sheets Insertion, Image Rotation, Document Server (3,000 File Capacity) with Folder Management and Password Protection, Web Browser, Duplex, Electronic/Rotate Sorting, 8 Job Presets, 25 Job Programs, Negative/Positive, Sample Copy, Series Copy, Simplified Display, 1,000 User Codes, Stamps/Numbering, Interrupt Copy, Login/Logout Button, System Reset Timer, Import/Export of Preference Settings, Eco-Friendly Indicator, Centralized Address Book Management
Dimensions (WxDxH)	23.1" x 26.9" x 35.9" (587 x 684 x 913 mm) w/ARDF 23.1" x 26.9" x 37.9" (587 x 684 x 963 mm) w/SPDF
Weight	156.5 lbs. (71 kg) w/ARDF 168.6 lbs (76.5 kg) w/SPDF

*Bypass Tray only
**Typical electricity consumption by ENERGY STAR program

Printer Specifications (Standard)

Processor Speed	Intel® Atom Processor BayTrail-I 1.46 GHz
Connection Type	Standard on Device: 10Base-T/100Base-TX/1000Base-T Ethernet, USB Host Type A I/F (2 ports on back of device) Standard on Operation Panel: USB Host (Type A:1Port/Support USB Flash Memory), USB Host (Type A:1Port/Support optional Keyboard etc), USB Host Type Mini B and SD Card Slot Optional: IEEE 1284/ECP, IEEE 802.11b/g/n Wireless LAN

Network Protocols Supported Operating Systems

TCP/IP (IPv4, IPv6)
Windows Vista/7/8.1/10, Server 2008/2008R2/2012/2012R2; Unix Filters for Sun Solaris 9/10, HP-UX 11.x/11i v2/11i v3, SCO OpenServer 5.0.7/6.0, Red Hat Linux Enterprise V4/V5/V6, IBM AIX 5L/V5.3/V6.1/V7.1, Mac OS X 10.7 or later, SAP R/3, IBM iSeries AS/400* using OS/400 Host Print Transform, Citrix Xen App 6.5 or later

Device Management Utilities

Web Image Monitor, Embedded @Remote, @Remote Office Appliance, @Remote Connector NX, @Remote Enterprise Pro, Device Manager NX Lite and Accounting, Device Manager NX Pro and Enterprise, Printer Driver Packager NX

Printer Languages

Standard: PostScript emulation, PCL5e/PCL6

Print Resolution Standard Features

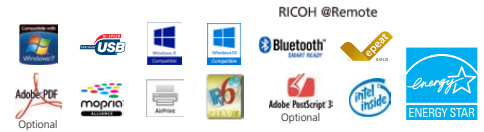
Optional: Adobe® PostScript®3*, XPS
Up to 1200 x 1200 dpi
Sample/Locked/Hold/Scheduled/Stored/Store and Print, PDF Direct Print, Mail to Print, Classification Code, Bonjour Support, Windows Active Directory Support, DDNS Support, PCL Resident Font Adoption, Tray Parameter Change from Web Image Monitor, 1200 dpi Support, Universal Driver, XPS Support, WS Printer, Media Direct Print (Print from USB/SD), Banner Page Print, Auto Job Promotion, Poster Print, WPS Support, Send to Document Server, Layout (N-up), Watermark, Slip Sheet, Rotate, Do Not Print Blank Pages, Dithering, Toner Saving, Black Over Print, User ID/Code/Authentication, Edge to Edge Print

Security Features (Standard)

DataOverwriteSecurity System (DOSS), Windows/LDAP/Basic/User Code/802.1.x Wired Authentication, Address Book/Authentication Password/SSL Communication/S/MIME/PPsec Communication/HDD/SMTP over SSL/TLS/Wireless LAN Encryption, Network Protocol On/Off, IP Filtering, Unauthorized Copy/Print Prevention, Quota Setting/Account Limit, Compulsory Security Stamp, HDD Encryption

RICOH MP 2555/MP 3055/MP 3555

SYSTEM SPECIFICATIONS



Scanner Specifications (Standard)

Scan Speed (B&W & Full Color)	ARDF at 200/300 dpi: 79 ipm (Letter) ARDF at 200/300 dpi: 80 ipm (A4) SPDF at 200/300 dpi: Simplex – 110 ipm/ Duplex – 180 ipm (A4)
Scan Resolution	Full Color & B&W: Up to 600 dpi TWIN: Up to 1200 dpi
Scan Area/Platen Size	Up to 11" x 17"
Connection Type	Standard: 10Base-T/100Base-TX/1000Base-T Ethernet Optional: IEEE 802.11a/b/g/n Wireless LAN TCP/IP, SMB, SMTP, POP, LDAP, FTP, IMAP4
Protocol	Single and Multi-Page TIFF/PDF, High Compression PDF, PDF/A and Single-Page JPEG
File Formats	Embedded Scan-to Email/Folder/SMB/FTP/ URL/PDF/A/Digitally Signed PDF, TWIN and Color Scanning, Auto Size Detection, Auto Density Selection, Image Rotation, SADF/Batch Mode, Mixed Size Mode, Reduce and Enlarge, Split Scan from Booklet Type Original, WS Scanner, LDAP Support, Preview Before Transmission, PDF Encryption, Drop Out Color Send, Distributed Scan Management
Standard Features	Embedded Scan-to Email/Folder/SMB/FTP/ URL/PDF/A/Digitally Signed PDF, TWIN and Color Scanning, Auto Size Detection, Auto Density Selection, Image Rotation, SADF/Batch Mode, Mixed Size Mode, Reduce and Enlarge, Split Scan from Booklet Type Original, WS Scanner, LDAP Support, Preview Before Transmission, PDF Encryption, Drop Out Color Send, Distributed Scan Management

Fax Specifications (Optional)

Fax Option Type M29

Circuit	PSTN, PBX
Compatibility	ITU-T (CCITT) G3
Resolution	200 x 200/100 dpi; 400 x 400 dpi (optional)
Compression Method	MH, MR, MMR, JBIG
Scanning Speed (LEF)	Up to 68 spm (Letter/A4)
Modem Speed	33.6 Kbps with auto fallback
Transmission Speed	G3: 3 seconds per page (MMR Compression) G3: 2 seconds per page (JBIG Compression) 4 MB standard/64 MB maximum (320 pages/4,800 pages)

Max Auto Dials	2,000
Group Dials	100 (max. 500 numbers per group)
Standard Features	One Hour Backup, LAN-Fax Capability, Internet Faxing (T.37), IP Faxing (T.38), Fax Forwarding to E-Mail/Folder, Paperless Fax (HDD), Detection of Misplaced Document, Double-check of Destination Address, Direct SMTP, LDAP Support, Universal Send (Simultaneous Fax and Scan), Fax Line Assignment, Fax Output Timer Remote Fax, Simultaneous Operation of up to 3 lines

Optional Features

Optional Hardware Accessories

Paper Handling & Cabinet Options

One-Tray Paper Bank (PB3150/PB3250)¹

Tray Capacity	550 sheets x 1 tray
Paper Size	5.5" x 8.5" to 11" x 17" (A5 – A3)
Paper Weight	16 – 80 lb. Bond/166 lb. Index (60 – 300 g/m ²)
Dimensions (WxDxH)	23.1" x 27" x 4.7" (587 x 685 x 120 mm)

Requires installation of Caster Table Type M3

Two-Tray Paper Bank (PB3220)¹

Tray Capacity	1,100 sheets (550 sheets x 2 trays)
Paper Size	5.5" x 8.5" to 11" x 17" (A5 – A3)
Paper Weight	16 – 80 lb. Bond/166 lb. Index (60 – 300 g/m ²)
Dimensions (WxDxH)	23.1" x 27" x 9.7" (587 x 685 x 247 mm)

Tandem Large Capacity Tray (PB3230/PB3260)¹

Tray Capacity	2,000 sheets (1,000 sheets x 2)
Paper Size	8.5" x 11" (A4)
Paper Weight	14 – 80 lb. Bond/166 lb. Index (60 – 300 g/m ²)
Dimensions (WxDxH)	23.1" x 27" x 9.7" (587 x 685 x 247 mm)

Side Large Capacity Tray (RT3030)

Tray Capacity	1,500 sheets
Paper Size	8.5" x 11" (A4)
Paper Weight	16 – 80 lb. Bond/166 lb. Index (60 – 300 g/m ²)
Dimensions (WxDxH)	13.4" x 21.4" x 11.4" (340 x 545 x 290 mm)

Requires installation of Two-Tray Paper Bank (PB3220) or Tandem LCT (PB3230/PB3260)

Cabinet Type F

Dimensions (WxDxH)	23.1" x 26.7" x 10" (586 x 679 x 256 mm)
Weight	Less than 29.3 lbs. (13.25 kg)

Output Trays & Finisher Options

Internal Shift-Sort Tray (SH3070)

Tray Capacity	250 sheets (8.5" x 11" or smaller) (A4 – A5) 125 sheets (8.5" x 14" or larger) (B4 – A3)
Paper Size	5.5" x 8.5" to 12" x 18" (A5 – A3)
Paper Weight	14 – 80 lb. Bond/166 lb. Index (52 – 300 g/m ²)

Cannot be installed with any Finisher

1 Bin Tray (BN3110)

Paper Size	5.5" x 8.5" to 11" x 17" (A5 – A3)
Paper Weight	14 – 80 lb. Bond/166 lb. Index (52 – 300 g/m ²)

Tray Capacity

250-Sheet Stapleless Internal Finisher (SR3180)

Paper Size	5.5" x 8.5" to 11" x 17" (A6 – A3)
Paper Weight	14 – 80 lb. Bond/166 lb. Index (52 – 300 g/m ²)

Stack Capacity	250 sheets (8.5" x 11" or smaller) (A4) 125 sheets (8.5" x 14" or larger) (B4 – A3)
----------------	--

Staple Paper Size	7.25" x 10.5" to 11" x 17" (A4 – A3)
Staple Paper Weight	17 – 21 lb. Bond (64 – 80 g/m ²)
Stapleless Capacity	2 – 5 sheets/set
Staple Positions	Top, 1 Staple
Dimensions (WxDxH)	17.1" x 20.3" x 5.9" (435 x 515 x 150 mm)

500-Sheet Internal Finisher (SR3130)¹

Paper Size	5.5" x 8.5" to 12" x 18" (A6 – A3)
Paper Weight	14 – 80 lb. Bond/166 lb. Index (52 – 300 g/m ²)

Stack Capacity	500 sheets (8.5" x 11" or smaller) (A4) 250 sheets (8.5" x 14" or larger) (B4 – A3)
----------------	--

Staple Paper Size	8.5" x 11" to 11" x 17" (A4 – A3)
Staple Paper Weight	14 – 28 lb. Bond (52 – 105 g/m ²)
Staple Capacity	50 sheets (8.5" x 11") (A4) 30 sheets (8.5" x 14" or larger, and/or Mixed Sizes) (B4 – A3)
Staple Positions	Top, Bottom, 2 Staples
Dimensions (WxDxH)	21.5" x 20.6" x 6.7" (546 x 523 x 170 mm)

2-/3-Hole Punch Unit (PU3040NA)

(Optional; Installs inside SR3130 Internal Finisher)	
Punch Paper Sizes	7.25" to 10.5" to 11" x 17" (A4 – A3)
Punch Paper Weight	14 – 45 lb. Bond/93 lb. Index (52 – 169 g/m ²)

1,000-Sheet Hybrid Staple + Stapleless Finisher (SR3210)^{1,2,3}

Paper Size	Proof Tray: 5.5" x 8.5" to 12" x 18" (A6 – A3) Shift Tray: 5.5" x 8.5" to 12" x 18" (A6 – A3)
Paper Weight	Proof Tray: 14 – 45 lb. Bond/93 lb. Index (52 – 169 g/m ²) Shift Tray: 14 – 80 lb. Bond/166 lb. Index (52 – 300 g/m ²)

Stack Capacity	Proof Tray: 250 sheets (8.5" x 11") (A4); 50 sheets (8.5" x 14" or larger) (A4 – B3) Shift Tray: 1,000 sheets (8.5" x 11") (A4); 500 sheets (8.5" x 14" or larger) (A4 – B3)
----------------	---

Stapleless Capacity	2 – 5 sheets/set
Staple Capacity	50 sheets (8.5" x 11") (A4) 30 sheets (8.5" x 14" or larger) (B4) 8.5" x 11" to 11" x 17" (A4 – A3)
Staple Paper Size	14 – 28 lb. Bond (52 – 105 g/m ²)
Staple Paper Weight	14 – 28 lb. Bond (52 – 105 g/m ²)
Staple Positions	Top, Bottom 2 Staples
Dimensions (WxDxH)	25.4" x 24.4" x 37.8" (646 x 620 x 960 mm)

1,000-Sheet Booklet Finisher (SR3220)^{1,2,3}

Paper Size	Proof Tray: 5.5" x 8.5" to 12" x 18" (A6 – A3) Shift Tray: 5.5" x 8.5" to 12" x 18" (A6 – A3) Booklet Tray: 8.5" x 11" to 12" x 18" (A4 – A3)
------------	---

Paper Weight	Proof Tray: 14 – 45 lb. Bond (52 – 169 g/m ²) Shift Tray: 14 – 80 lb. Bond/166 lb. Index (52 – 300 g/m ²) Booklet Tray: 14 – 28 lb. Bond (52 – 105 g/m ²)
--------------	---

Stack Capacity	Proof Tray: 250 sheets (8.5" x 11" or smaller) (A4); 50 sheets (8.5" x 14" or larger) (B4 – A3) Shift Tray: 1,000 sheets (8.5" x 11" or smaller) (A4); 500 sheets (8.5" x 14" or larger) (B4 – A3) Booklet Tray: 20 Sets (2 – 5 sheets), 10 Sets (6 – 10 sheets) & 7 Sets (11 – 15 sheets)
----------------	---

Staple Capacity	Normal Staple: 50 sheets (8.5" x 11") (A4); 30 sheets (8.5" x 14" or larger) (B4 – A3)
-----------------	---

Saddle Stitch:	15 sheets
Staple Paper Size	Normal Staple: 8.5" x 11" to 12" x 18" (A4 – A3) Saddle Stitch: 8.5" x 11" to 12" x 18" (A4 – A3)

Staple Paper Weight	14 – 28 lb. Bond (52 – 105 g/m ²)
Staple Positions	Top, Bottom, 2 Staples, Booklet
Dimensions (WxDxH)	22.2" x 24.4" x 37.8" (563 x 620 x 960 mm)

2-/3-Hole Punch Unit (PU 3050NA)

(Optional; Installs inside SR3210 or SR3220 Finisher)	
Punch Paper Sizes	5.5" x 8.5" to 11" x 17" (A5 – A3)
Punch Paper Weight	14 – 68 lb. Bond/142 lb. Index (52 – 256 g/m ²)

Additional Accessory Options

Bridge Unit BU3070, NFC Card Reader Type M29, HotSpot MFP Option
Type S, ESP XG-PCS-15D Power Filter, Fax Connection Unit Type M29,
G3 Interface Unit Type M29, Fax Memory Unit Type M19 64 MB, File
Format Converter Type M19, IEEE 1284 Interface Board Type M19,
IEEE 802.11a/b/g/n Interface Unit Type M19, Key Counter Bracket Type
M3, OCR Unit Type M13, Optional Counter Interface Unit Type M12,
PostScript3 Unit Type M29, Smart Card Reader Built-in Unit Type M29,
SCR3310v2 USB Smart Card Reader, XPS Direct Print Option Type M29,
Extended USB Board Type M19, External USB Keyboard (No Bracket),
External Keyboard Bracket Type M19, Caster Table Type M3

¹ Caster Table Type M3 must be installed

² Requires configuration with Bridge Unit BU3070.

³ Cannot be installed together.

⁴ Requires installation of Two-Tray Paper Bank (PB3220) or Tandem Large Capacity
Tray (PB3230/PB3260).

⁵ Availability is limited, the PB3230 will be replaced by the PB3260 at a later date.

⁶ Availability is limited, the PB3150 will be replaced by the PB3250 at a later date.

Note: Some accessories require additional equipment or may be prerequisites
for other options. Some images contained in this brochure do not show the
stabilizers that ship with the optional paper feed units. Some options may not
be available at the time of market release.

Genuine Adobe® PostScript®3 and PDF Direct from Adobe® are available as options.

The Bluetooth® word mark and logos are registered trademarks owned by the
Bluetooth SIG, Inc. and any use of such marks by Ricoh Co., Ltd. is under license.
Other trademarks and trade names are those of their respective owners.

Specifications are subject to change without notice.

For maximum performance and yield, we recommend using genuine Ricoh parts
and supplies.

RICOH
imagine. change.

www.ricoh-usa.com

Ricoh USA, Inc., 70 Valley Stream Parkway, Malvern, PA 19355, 1-800-63-RICOH

Ricoh® and the Ricoh logo are registered trademarks of Ricoh Company, Ltd. All other trademarks are the property of their respective owners © 2017. Ricoh USA, Inc. All rights reserved.
The content of this document, and the appearance, features and specifications of Ricoh products and services are subject to change from time to time without notice. Products are shown
with optional features. While care has been taken to ensure the accuracy of this information, Ricoh makes no representation or warranties about the accuracy, completeness or adequacy
of the information contained herein, and shall not be liable for any errors or omissions in these materials. Actual results will vary depending upon use of the products and services, and the
conditions and factors affecting performance. The only warranties for Ricoh products and services are as set forth in the express warranty statements accompanying them.

R3827-C